

Caution: Always make sure that firearm is completely unloaded before performing any work. These instructions provide gunsmiths and home builders with useful tips for installation. This is a relatively simple task but does require careful, patient work and a certain amount of mechanical skill. Please consider returning the kit for a refund or taking it to a gunsmith to install if you have any doubt as to whether you are capable of performing the installation.

Congratulations and thank you for purchasing this device for your firearm. When properly installed, the folding hinge should provide many years of dependable service. These instructions are provided to explain the optimal installation method. To secure the hinge to a 1913 rail, a dogpoint set screw is provided for each of 3 threaded holes. The holes are extended through the back of the hinge base to provide access for a hex key wrench. These 3 screws are all that is needed to mount your hinge but we also provide 3 jam screws that can be used to lock the dogpoint screws into place securely to prevent unintended loosening.

Tools

5/32 hex key wrench

Mounting hardware

3X 5/16"-18 X 3/8" long extended tip dogpoint set screw
3X 5/16"-18 X 5/32" long hollow lock set screw (jam screw)

Procedure

Make sure that each jam screw is screwed into the base first and flush or protruding out slightly as shown (fig1). Then place wrench in from back side, through the hollow set screw and into one of the dogpoint screws (fig2). Next, back both of the screws together, into the hole until the dogpoint screw tip is flush (fig3).

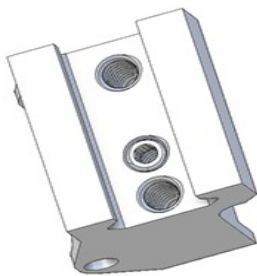


Fig1

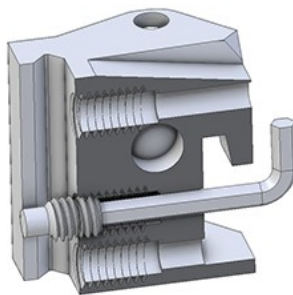


Fig2 (base cutaway)

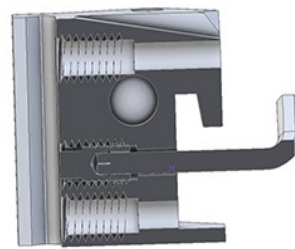


Fig3 (full cutaway)

Align the hinge base vertically on the rail section of your gun in a way that will allow at least one of the 3 provided mount screws to fit into a slot in the rail. Tighten the dogpoint into that slot disregarding the jam screw for now (fig4). Achieve the tightness that you need with the dogpoint screw before locking the jam screw in place.

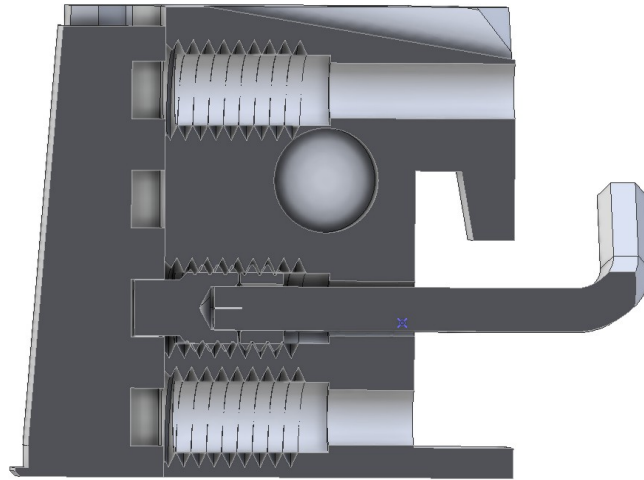


Fig4 (full cutaway)
wrench engaged through jam screw and dogpoint screw

To lock with the jam screw, slide the hex wrench back until you are engaging the hollow set screw (but not the dogpoint screw) (fig5) and tighten it into the back of the dogpoint screw.

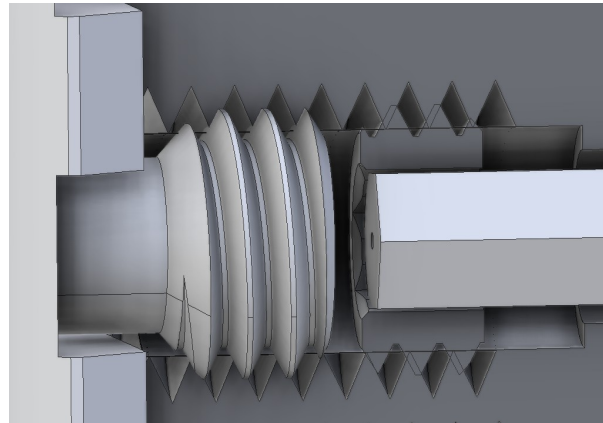


Fig 5 (base and jam screw cutaway)
wrench engaged only in jam screw

For removal, place wrench in to engage only the jam screw (fig5) and loosen slightly. Then push wrench through to engage the dogpoint screw as well and loosen both of them together as far back as possible.

We wish you all the best with your gun build and thanks for your support!

CNC Warrior Product Development

**** The determination of the suitability of any product for certain specific use is the responsibility of the purchaser.

All firearms are potentially dangerous and can cause personal injury or death.

IT IS YOUR responsibility and legal obligation to properly handle, load, unload, use, transport, maintain, and store your firearm in a safe manner so as to prevent its accidental discharge. Likewise, parts for firearms are also potentially dangerous if installed improperly and can cause your firearm to malfunction and accidentally discharge.

Appropriate eye protection must be worn before attempting to work on any firearm.

No liability is expressed or implied for the damage or injury as a result of improper installation or use of this product.

Warranty is limited to the replacement of this product only.