

# CNC Piranha Brake



**We are happy to release this redesigned version of the 4pc Brake that we have manufactured and sold for many years. The body has been changed for functional and cosmetic improvements while maintaining compatibility with older model caps, springs, and conical inserts.**

**The new body offers numerous, symmetrical spring positions and timing detents to allow for optimal thread engagement on the cap as well as the muzzle of the firearm. Time proven performance aspects of the device are preserved, overall weight is reduced, hand grip is maximized, surface area is increased to promote heat dissipation.**

**We are releasing the M26 LH version now, with M24 RH, M14 LH, 5/8-24 RH, and 1/2-28 RH versions releasing over the next few weeks. Each version has been designed carefully to work optimally with the intended firearm platform. They each have different characteristics (mainly regarding muzzle attachment) and unique looks.**

**Here are some examples:**

**M26 X 1.5 LH**



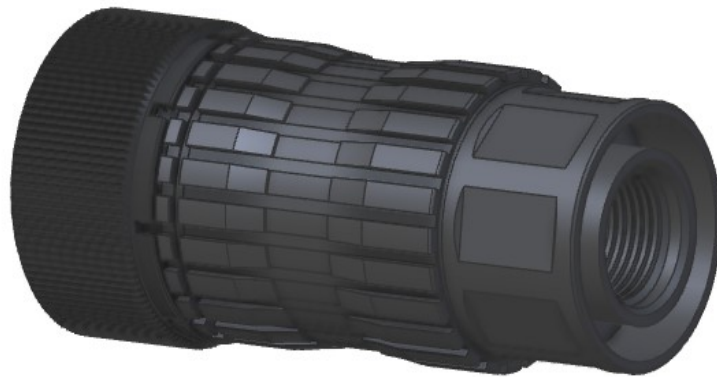
**Eight notches on rear allowing device to be threaded very close to your sight block and locked in place with detent. The rear diameter leaves just enough room to allow easy operation of the detent pin for installation/removal.**

**M24 X 1.5 RH**



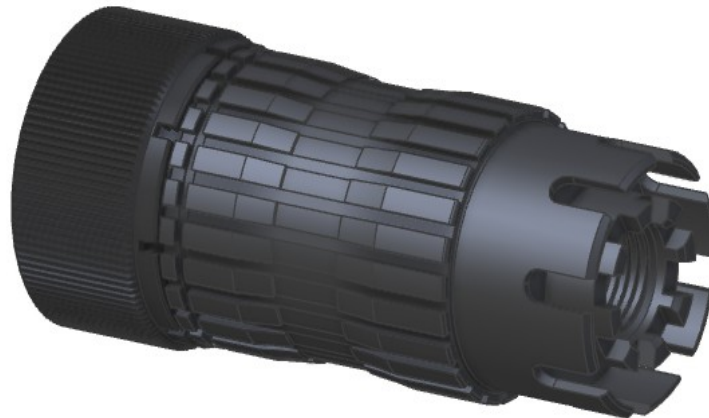
**Same as the M26 version but the rear diameter is reduced to allow operation of detent.**

**5/8 -24 RH**



**For 5/8-24, the detent notches are replaced with wrench flats to allow tightening to a crush washer or jam nut. Rear is trepanned for weight reduction, while the larger diameter provides better look on the gun.**

**M14x1 LH**



**For standard AK, eight detent cuts are available for close attachment to muzzle. It is trepanned for weight reduction and outer diameter slots provide access to detent for installation/removal.**